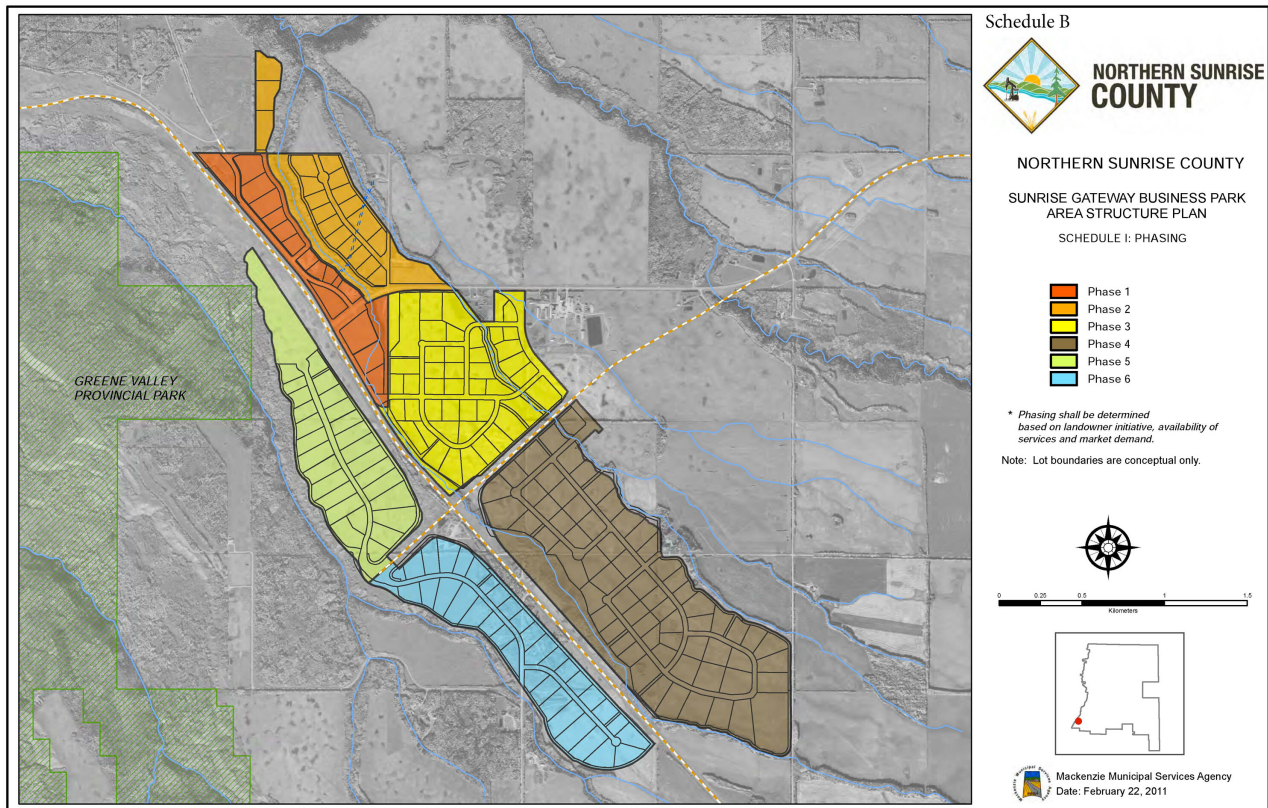




NORTHERN SUNRISE
COUNTY

We've got it all!

Sunrise Gateway Business Park



The Sunrise Gateway Business Park is located on Highway 2 and Highway 688. Overlooking the Peace and Heart River Valley and the Town of Peace River, with traffic counts of 5000 per day.



NORTHERN SUNRISE
COUNTY

We've got it all!

Sunrise Gateway Business Park

The County of Northern Sunrise is located within Alberta's North Peace Country and supports a population of 1,936 residents, who bring both industrious and entrepreneurial spirit to the region. While trading area is estimated at around 17,000 people.

The Sunrise Gateway Business Park is a sound choice for business development and provides the following:

- Ease of access to efficient transportation route Highway 2
- No business license fee
- Access to all utilities, water, sewers and high speed internet
- Favorable tax structure
- Highway 2 brings many commuter from different municipalities and neighbouring communities as well as its residents.

For more information you contact:

Economic Development officer : Lynn Florence 780-625-3288

Development officer : Jennifer Regal 780-625-3284

